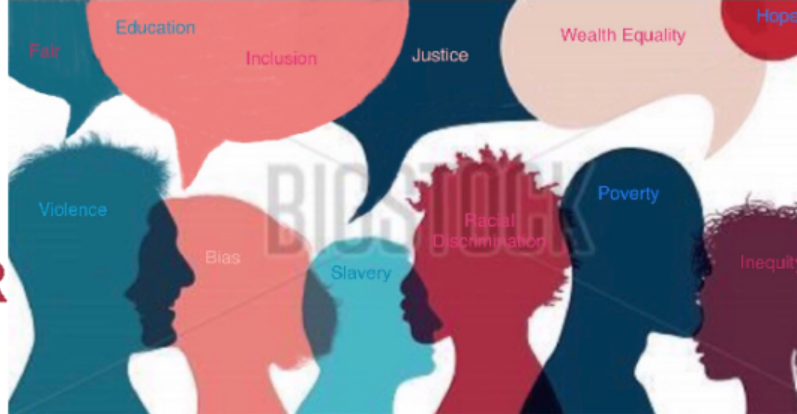


# INSIDE OUT: BLACK VOICES MATTER

Published by the Southern Delaware Alliance for Racial Justice



## Introduction demo 682 words

NASW-DE 3/22 Symposium, Afternoon Session, Total Time: 70 min. (Agenda 1:00-2:15pm/75 min)

1) From 1 to Many: set up the afternoon session – 5 Minutes

Say the following to open the session: Participants will be asked to reflect on the panel discussion.

As we reflect on the healthcare transformation model, we need to move from focusing on closing the gaps for ONE – the individual or family level and consider how we close the gap for the MANY – groups, communities, and cities.

This afternoon session is intended to discuss practices within a micro, mezzo, and macro-level framework for 3 sample Social Determinants Of Health will also be provided as a reference (SDOH: Transportation, Violence, Obesity).

We want you to have stimulating discussion and debate which we anticipate will spark your desire to continue to use your micro, mezzo and macro practice skill to close the gap on social determinants of health for our clients and communities.

2) Self- Assessment Mapping – 5-8 minutes

All participants will be provided a chart and be invited to work individually to map an inventory of their micro, mezzo, and macro-levels of engagement across the social determinants of health. An example will be provided within the chart to help clarify the exercise.

Debriefing: For the area with the most items, place a large check mark in that column. This represents the work you are doing well already. Can ask everyone to give themselves a hand (validate them). Identify the column with the least items or where you feel you could be working more. Circle this column. We will come back to this later.

3) Reflection and Discussion – 40 minutes

INSTRUCTIONS: In round tables, participants will be asked to identify a recorder, write on flip chart paper, and will be asked to share with the larger group.

## EDITORIAL BOARD

- Toni Barrett, Editor-in-Chief
- Sara Ford
- Charlotte King
- Syl Woolford
- Joseph Lawson
- Dr. Marlene A. Saunders
- Syl Woolford
- Debra O'Neal, Graphic Designer

Inside Out is a quarterly newsletter.

### Donate

Your donation to the Southern Delaware Alliance for Racial Justice (SDARJ) is so important to us. Please [click here](#) to give a donation or you can send your donation by mail: Southern Delaware Alliance for Racial Justice (SDARJ)  
P.O. Box 306  
Lewes, Delaware 19958

**Truth is Knowledge.  
Knowledge is Truth.**