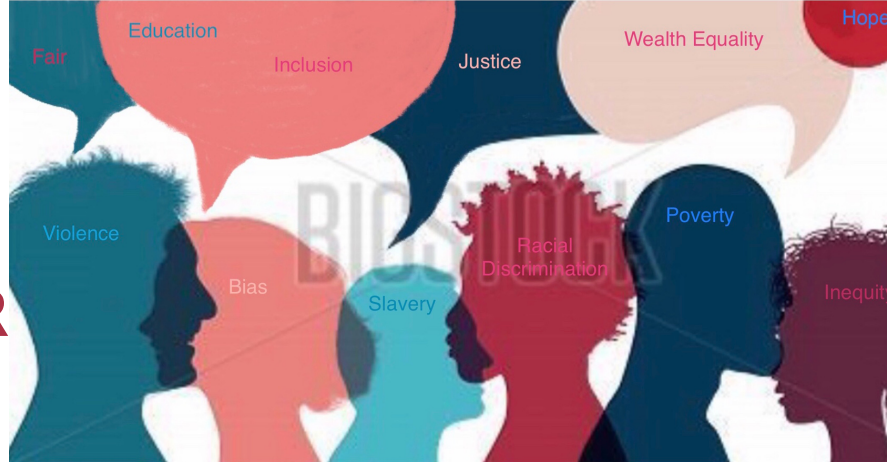


VOL. 1 | JULY 2021

# INSIDE OUT: BLACK VOICES MATTER



Published by the Southern Delaware Alliance for Racial Justice

## Introduction demo 682 words

NASW-DE 3/22 Symposium, Afternoon Session, Total Time:70 min. (Agenda 1:00-2:15pm/75 min)

1) From 1 to Many: set up the afternoon session – 5 Minutes

Say the following to open the session: Participants will be asked to reflect on the panel discussion.

As we reflect on the healthcare transformation model, we need to move from focusing on closing the gaps for ONE – the individual or family level and consider how we close the gap for the MANY – groups, communities, and cities.

This afternoon session is intended to discuss practices within a micro, mezzo, and macro-level framework for 3 sample Social Determinants Of Health will also be provided as a reference (SDOH: Transportation, Violence, Obesity).

We want you to have stimulating discussion and debate which we anticipate will spark you desire to continue to use your micro, mezzo and macro practice skill to close the gap on social determinants of health for our clients and communities.

2) Self- Assessment Mapping – 5-8 minutes

All participants will be provided a chart and be invited to work individually to map an inventory of their micro, mezzo, and macro-levels of engagement across the social determinants of health. An example will be provided within the chart to help clarify the exercise.

Debriefing: For the area with the most items, place a large check mark in that column. This represents the work you are doing well already. Can ask everyone to give themselves a hand (validate them). Identify the column with the least items or where you feel you could be working more. Circle this column. We will come back to this later.

3) Reflection and Discussion – 40 minutes

INSTRUCTIONS: In round tables, participants will be asked to identify a recorder, write on flip chart paper, and will be asked to share with the larger group.

## EDITORIAL BOARD

- Toni Barrett, Editor-in-Chief
- Sara Ford
- Charlotte King
- Syl Woolford
- Joseph Lawson
- Dr. Marlene A. Saunders
- Syl Woolford
- Debra O'Neal, Graphic Designer

Inside Out is a quarterly newsletter.

### Donate

Your donation to the Southern Delaware Alliance for Racial Justice (SDARJ) is so important to us. Please [click here](#) to give a donation or you can send your donation by mail: Southern Delaware Alliance for Racial Justice (SDARJ)  
P.O. Box 306  
Lewes, Delaware 19958

**Truth is Knowledge.  
Knowledge is Truth.**

Each table will be provided a social determinant of health.

- What obstacles exist related to this determinant?
- What are some existing resources to close the gap?
- What additional resources are required to close the gap?
- What do you need to know to be effective in your micro, mezzo and/or macro practice?

Recorder: record the top two responses for each question on the flip chart. This will be reported out to large group.

#### 4) Report Outs – 15 minutes

Reporters from the tables will share from their tables responses.

Table Facilitators: Consider having the tables with the same determinants share and compare responses. Be sure to leave time for all tables to report out.

#### 5) Wrap-Up – 10-12 minutes

Food for thought, while we only focused on three social determinants of health, there are many others. As we wrap up this segment, consider what has been discussed at your table. If you replace the SDOH, how does that change the discussion, gaps or solutions?

ASK AUDIENCE: Use the post-it notes to answer two final questions:

- What was your greatest take-away (“ah-ha moment) from today’s symposium?

- What additional information do you need to be more active in closing the gap on social determinants of health?

Take the post it notes and place them on the charts as you exit and pick up your certificates.

TELL AUDIENCE: NASW-DE will share these ideas and the resources from this symposium via the website [NASWDE.org](http://NASWDE.org)

#### Materials Needed:

- Collaboration Cards (Health-in-a-Box Toolkit)
- Best Practices Hand-out (Noel to create using Health-in-a-Box, CDC Connecting the Dots as guideo)
- Copies of Self-Assessment Inventory (Debra to create)
- Copies of Table Discussion Questions (Debra to create)
- Flip chart paper and markers for each table (Noe/UD can provide markers- not sure about flip chart paper- can NASW-DE or DSU provide these?)
- Sticky Notes for Idea Walls – (Post it Flip Charts will be around the room or common area w/prompt questions – “A-has for the day?”, “The one thing I hope to learn more about as a result of today’s symposium is....”, “The one thing I plan to do as a result of this symposium is....” (Noel/UD can provide sticky notes)



## Family Day theme announced

*By James Lopez*

A parent-teacher conference, parent-teacher interview or parents' evening, is a short meeting or conference between the parents and teachers of students to discuss children's progress at school and find solutions to academic or behavioral problems.

Parent-teacher conferences supplement the information conveyed by report cards by focusing on students' specific strengths and weaknesses in individual subjects and generalizing the level of inter-curricular skills and competences.

Each table will be provided a social determinant of health.

- What obstacles exist related to this determinant?
- What are some existing resources to close the gap?
- What additional resources are required to close the gap?
- What do you need to know to be effective in your micro, mezzo and/or macro practice?

Recorder: record the top two responses for each question on the flip chart. This will be reported out to large group.

4) Report Outs – 15 minutes

Reporters from the tables will share from their tables responses.

Table Facilitators: Consider having the tables with the same determinants share and compare responses. Be sure to leave time for all tables to report out.

5) Wrap-Up – 10-12 minutes

Food for thought, while we only focused on three social determinants of health, there are many others. As we wrap up this segment, consider what has been discussed at your table. If you replace the SDOH, how does that change the discussion, gaps or solutions?

ASK AUDIENCE: Use the post-it notes to answer two final questions:

- What was your greatest take-away (“ah-ha moment) from today’s symposium?
- What additional information do you need to be more active in closing the gap on social determinants of health?

Take the post it notes and place them on the charts as you exit and pick up your certificates.

TELL AUDIENCE: NASW-DE will share these ideas and the resources from this symposium via the website NASWDE.org



Materials Needed:

- Collaboration Cards (Health-in-a-Box Toolkit)
- Best Practices Hand-out (Noel to create using Health-in-a-Box, CDC Connecting the Dots as guide)
- Copies of Self-Assessment Inventory (Debra to create)
- Copies of Table Discussion Questions (Debra to create)
- Flip chart paper and markers for each table (Noel/UD can provide markers- not sure about flip chart paper- can NASW-DE or DSU provide these?)
- Sticky Notes for Idea Walls – (Post it Flip Charts will be around the room or common area w/prompt questions – “A-ha for the day?”, “The one thing I hope to learn more about as a result of today’s symposium is....”, “The one thing I plan to do as a result of this symposium is....” (Noel/UD can provide sticky notes)



The Southern Delaware Alliance For Racial Justice

... Ending Racism And Its Corrosive Consequences